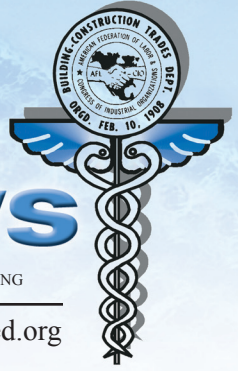


BTMED news



SUPPORTED BY THE BUILDING & CONSTRUCTION TRADES DEPARTMENT, AFL-CIO • COORDINATED BY CPWR - THE CENTER FOR CONSTRUCTION RESEARCH & TRAINING

Medical Edition

January 2013

www.btmed.org

Building Trades National Medical Screening Program *Results Since Inception*

With the diligent help of our medical providers, BTMed has completed nearly 26,000 screenings since its inception in 1996. The results indicate that former Department of Energy (DOE) construction workers suffer disproportionately from a variety of relatively rare medical conditions. For instance, evidence of work-related lung disease appears on the x-rays of nearly *ONE* in *FIVE* BTMed participants, mostly due to asbestos exposure. Perhaps the test result that most distinguishes these workers is the 1.4% who have tested abnormal for beryllium sensitivity, a condition virtually unknown to the general population. 28 of these have been diagnosed with chronic beryllium disease.

Of the 26,000 screenings, BTMed's providers have diagnosed:

- *4,100 cases of asbestos-related disease*
- *Over 4,700 cases of COPD*
- *Nearly 9,000 cases of hearing loss*

97% of BTMed Participants are satisfied with the Program

CT Scan Detects Cancers In Workers

In a pilot CT scan screening program for 100 former Oak Ridge site workers, doctors identified 29 nodules needing additional evaluations. TWO participants were diagnosed with stage IV lung cancer; follow-up scans identified two more with nodules requiring antibiotic treatment and a third diagnosed with kidney cancer. The Department of Energy (DOE) has committed additional resources to expand the CT scan program.

Plans are underway to begin scans for former Hanford workers.

BTMed Participates In COPD Study

BTMed is participating in one of the largest studies ever of occupational risks for chronic obstructive pulmonary disease (COPD). With research funding from the National Institute for Occupational Safety and Health (NIOSH), Duke University has begun a three-year study focused on the causes of COPD and the extent to which they contribute to its development. Those who develop COPD find it hard to breathe because of chronic bronchitis and emphysema, which has led it to become the 4th leading cause of death in the United States.

Some BTMed participants will receive a letter asking them to participate in a 20-minute telephone interview.

BTMed participants have a significantly higher risk of COPD compared to the general population.

By tapping into the pool of former construction workers, causes of COPD can be measured in a way will help facilitate the prevention of it in the future.

Is Your Clinic Using The Portal?

Visit www.BTMed.org

The Physician's Portal on www.btmed.org offers your clinic a way to easily access a patient's file for viewing and the entering of results.

Get immediate access to the patient's:

- B-read results
- Beryllium results
- GHP results

**Medical Providers
Click Here!**

Download documents:

- Consent forms
- Program protocols
- Patient education documents

Enter exam results:

- Online physician reporting form
- Control accuracy

BTMed.org is a SECURE SITE

Password protected and PIN required

To receive a Password and PIN number,
or for training and support to get started,

**Contact Sue Boone at
1-800-866-9663.**

*This is an easy way to make
your work more efficient and
save time!*

Building Trades National Medical Screening Program

Provider Portal

- Medical Exam Outline
 - Exam Outline
- Medical Protocol
 - U.S. Department of Energy Medical Screening Protocol for the Former Worker Medical Screening Program
- Program overview, rationale, description of medical modules, and summary of nationwide program results to date
 - Program Rationale
 - Surveillance of Respiratory Diseases Among Construction and Trade Workers at Department of Energy Nuclear Sites
 - Surveillance of Hearing Loss Among Older Construction and Trade Workers at Department of Energy Nuclear Sites
 - Screening for Beryllium Disease Among Construction Trade Workers at Department Of Energy Nuclear Sites
- Example of Occupational history
 - Occupational History Questionnaire
- Example of pre-authorization form
 - Pre-Authorization sample
- Medical history Questionnaire
 - Medical History Questionnaire
- Instructions to the participant before the exam, for blood draw, and for fecal occult blood test
 - Blood Draw
 - Hemocult Cover Letter
 - Hemocult Slides
- Informed consents
 - Stage 1 : Initial consent to participate, obtained by service office
 - Stage 2 : Consent for work history interview, obtained by service
 - Stage 3 : Consent for medical examination, obtained in your office
 - Stage 4 : Consent for beryllium LPT, obtained in your office
- Physical Exam form
 - Physical Exam form
- Procedure for critical and urgent lab values
 - Critical / Urgent Lab Values
- ATS documents on standardization and interpretation of Spirometry
 - General considerations for lung function testing
 - Standardisation of Spirometry
 - Guidelines from American Thoracic Society on Interpretation of Spirometry, 2005
 - Spirometry Policies and Procedures by KUMC
- Procedures and lab requisition forms for BeLPT
 - Beryllium screening in BTMed 2012 update and recommendations for medical evaluation
 - Consent forms, obtained in your office (same as in 7.D)
 - Codes and tubes needed for Quest Diagnostics
- Results letter example, and B-Read interpretation
 - Results letter example, results and recommendation codes for merge letter, and a CD with the merge letter and instructions on how to use it
 - Results letter example
 - Results / Recommendation Codes
 - An overview of how to interpret the B reader form
 - B-Read Interpretation
- Educational materials sent by Zenith Service office after the exam

View BTMed's Results and Research on www.BTMed.org

Click on "Resources & Links" and beneath the *Resources* heading, find reports regarding the:

- * Chronic Beryllium Disease *
- * Lung Disease *
- * Hearing Loss *

found among Department of Energy Construction Trades Workers.

© 2013, CPWR.

This publication was produced by CPWR through funding from the Department of Energy (DE-FC01-06EH06004). The information provided here is solely the responsibility of the authors and does not necessarily represent the official views of DOE.