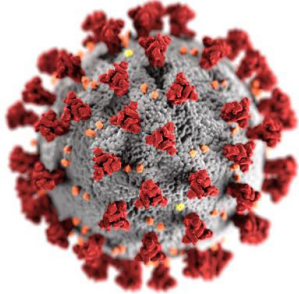




Important COVID-19 Updates



SPECIAL ANNOUNCEMENT FOR MEDICAL PROVIDERS

Due to the COVID-19 pandemic, all BTMed medical screening exams and CT scans remain suspended. We are currently contacting our medical providers to discuss their COVID-19 protocols and the status of getting their staff vaccinated. If you haven't heard from us, please call Kim Cranford at **865-481-8027** or email kcranford@zenith-american.com.

BTMed is cautiously optimistic that we will restart medical screening exams and CT scans again by May 2021. We are closely monitoring the COVID-19 pandemic and taking a cautious and slow approach to assess when it is appropriate to restart exams and CT scans.

Even as safe and effective COVID-19 vaccines are being distributed throughout the United States, it is still uncertain when we will return to sense of normality. Experts do not yet know the proportion of the population that would need to be vaccinated to achieve herd immunity against COVID-19.

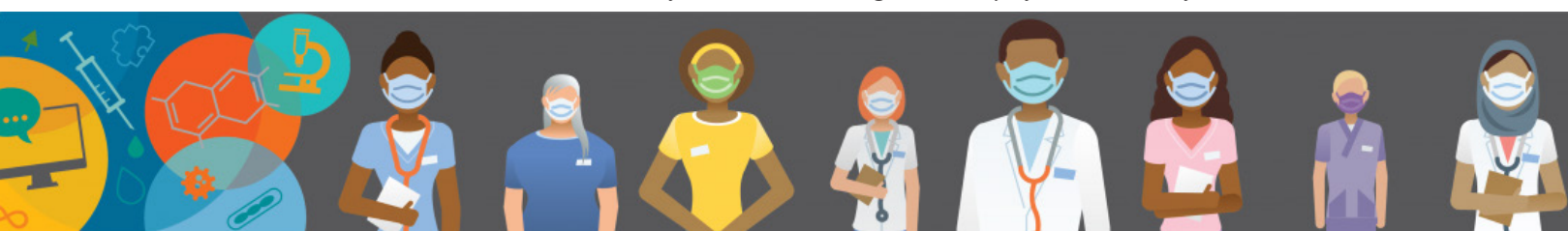
As of January 2021, number of BTMed participants:

1,400+	900+
Waiting for screening exams	Waiting for CT scans

We have developed a Remote Health Assessment (RHA) alternative to in-clinic exams, with participants meeting virtually with a nurse to discuss their medical history and identify conditions that may be referred for medical follow up or compensation. The medical history information will provide insight on the participant's health status even before they arrive at the clinic. Stay tuned for more information on the RHA.

At BTMed, we thank our medical providers for their continued support and dedication to the program and for their preparations to protect our participants and ensure their safety. While many challenges and uncertainties still remain, we look forward to working together.

Information and images courtesy of the Centers of Disease Control and Prevention.



BTMed Lung Cancer Mortality Research Targets Screening Criteria

BTMed's commitment to research to improve screenings for construction workers was highlighted in a study on lung cancer mortality. Published in the *Journal of Occupational and Environmental Medicine*, the study examined records of more than 17,000 program participants, including 352 who died from lung cancer, to identify predictors that can better define eligibility for low-dose CT (LDCT) scans, which can improve early detection. It found that while using only age and smoking history as criteria identified 51% of those who would eventually die of lung cancer, adding factors including chest X-rays, spirometry, prior cancer history, and duration of construction work raised the identification rate to 86%. The results support inclusion of risk from occupational exposures and respiratory clinical findings in LDCT clinical guidelines to better target high-risk individuals for screening. Visit www.btmed.org/Publications/MedicalFindings.cfm to read the full paper.



COVID-19 Vaccines - Resources for Healthcare Personnel

COVID-19 vaccines are one of many important tools to help stop this pandemic. Currently, two COVID-19 vaccines are authorized and recommended for use in the United States: the Pfizer-BioNTech and Moderna vaccines. Healthcare personnel were placed first in line to receive the COVID-19 vaccines because of their essential role in fighting this deadly pandemic and their increased risk of getting COVID-19.



Getting vaccinated and using all current protective measures can protect more than just their health. It can also help protect their colleagues, patients, families, and communities.

CDC has communication toolkits and educational materials on COVID-19 vaccination available that medical centers and healthcare personnel can use to:

- Educate staff about the vaccines and how to build vaccine confidence
- Educate patients and how to have effective conversations and answer their questions about the vaccines

For information and resources on COVID-19 vaccines, visit www.cdc.gov/vaccines/covid-19/health-systems-communication-toolkit.html.