



BTMed Surpasses 50,000 Exams!

Last fall, BTMed reached the 50,000th exam for former DOE construction workers—a culmination of 30 years of medical screening. These exams, provided to over 25,000 participants, represent a major achievement in monitoring former DOE workers for illnesses related to occupational exposures.

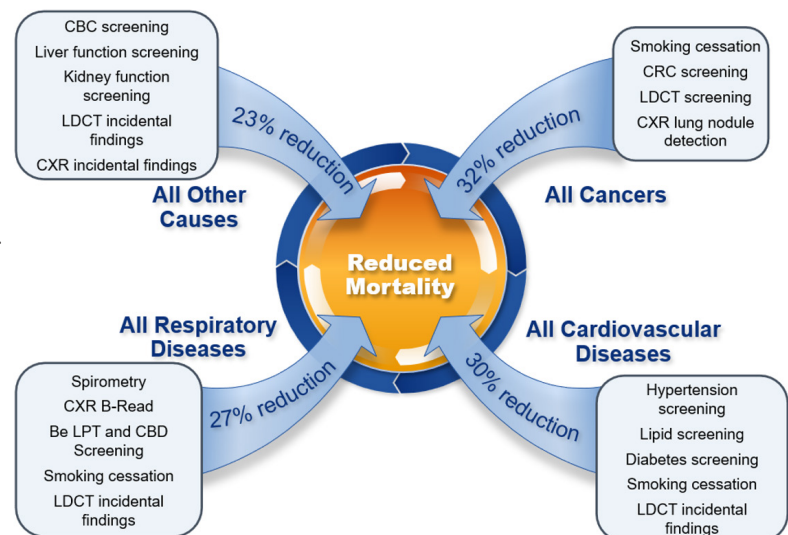
BTMed could not have reached this milestone without you—our providers—being the ones who performed the exams. We are grateful to every provider who has provided former DOE workers with a high-quality exam and done so with great care and concern. These exams have saved lives—and we just published a study that proves this ...

How Have These Exams Made an Impact? BTMed Publishes its Findings

- BTMed has **prevented 2,900 premature deaths**—equal to **1 out of every 8** participants—among the 23,452 participants included in the study.
- BTMed has **added 35,000 years of life** to its exam participants—which amounts to **1.5 years added** to each participant's life on average.
- Each year of life BTMed adds to a participant only costs an estimated total of \$2,757, comparable to the most cost-effective public health initiatives such as prenatal care.

In January, BTMed published its landmark study, highlighting the impacts that the program has had since 1996. The study showed that eligible participants who get exams through BTMed have a **28% lower mortality risk** than those who are eligible but do not participate. BTMed participants also have a significantly lower risk of death due to lung cancer or colorectal cancer.

The study, published in the American Journal of Industrial Medicine (AJIM), was made possible by the thousands of exams performed by the BTMed program with the help of providers like you. Over 23,000 former DOE construction workers were included in this study.

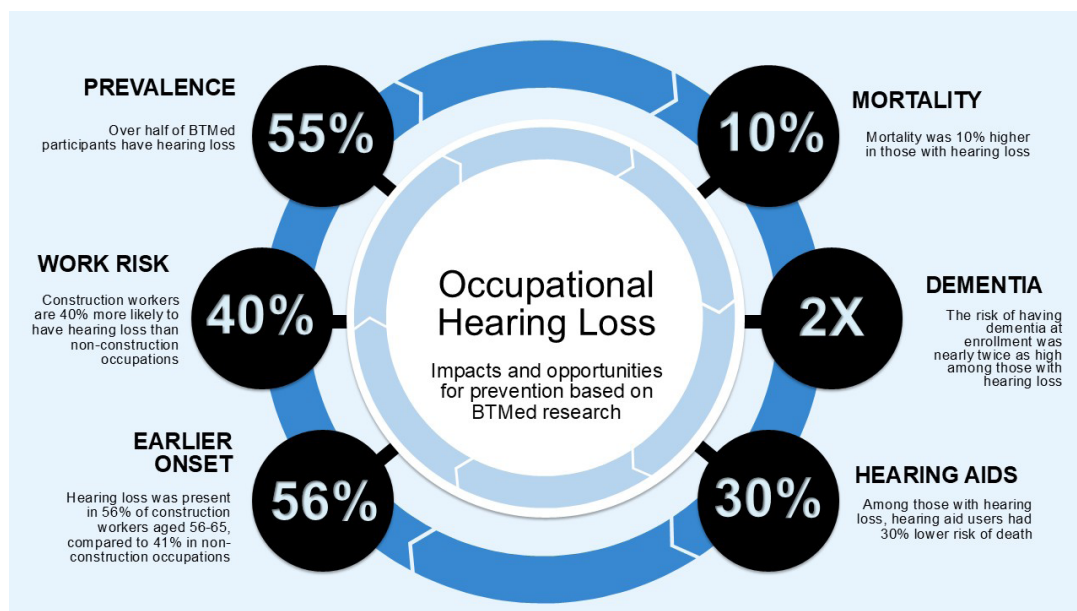


The full study is available on www.btmed.org and at onlinelibrary.wiley.com/doi/epdf/10.1002/ajim.70052

“Impact of Secondary Prevention on Mortality in the Building Trades National Medical Screening Program: Effectiveness of Occupational High-Risk Management”

BTMed Studies Show Important Hearing Loss Findings

BTMed research shows that hearing loss is common among construction workers and is associated with both increased risk of dementia and early mortality. For occupational health professionals, these data underscore the importance of **primary prevention** through rigorous noise exposure control, engineering solutions, work-practice modification, and consistent use of hearing protection, particularly early in workers' careers, before cumulative damage accrues. They also highlight a critical role for **secondary prevention**: routine audiometric surveillance, early identification of threshold shifts, and proactive counseling for workers showing early or mid-career hearing loss, when intervention may still alter long-term trajectories. Finally, the observed associations between hearing loss, mortality, and cognitive outcomes emphasize the value of **tertiary prevention**, including timely referral for hearing evaluation and encouragement of hearing-aid use among affected workers. Taken together, these findings position occupational health programs not only as stewards of regulatory compliance, but as key drivers of lifelong health protection, where preventing, detecting, and managing hearing loss may meaningfully influence broader health outcomes in aging worker populations.



To view our hearing loss studies (including hearing loss's impacts on dementia and mortality rates), as well as other relevant studies, please visit www.btmed.org. Click on "Publications" then "Published Medical Findings."

BTMed Visits Longtime Medical Provider in Oak Ridge, Tennessee

Earlier this year, BTMed made a visit to Netgain, one of BTMed's main medical providers in Oak Ridge, Tennessee. Netgain has screened hundreds of BTMed participants over the years, and participants have made it known just how great of an experience they've had, noting how courteous and respectful Netgain's staff is.

BTMed would like to offer a special thanks to Netgain for going above and beyond for our participants in Oak Ridge!



Left to right: BTMed Assistant Medical Program Manager Amanda Hall, RN; BTMed Medical Program Manager Betsey Hill, RN; Netgain Office Manager Ryan Daughtry; and Netgain's Dr. Timothy Oesch.

ADVERSE EVENT ALERT!

Adverse Events and Abnormal Medical Findings

In the event of an adverse event, including complaints from BTMed participants, or abnormal medical findings, providers are required to report these within 24-hours to Betsey Hill, BTMed Medical Program Manager, at 865-294-4543 and pbhill@zenith-american.com. She can be reached after business hours at 423-912-6185.

